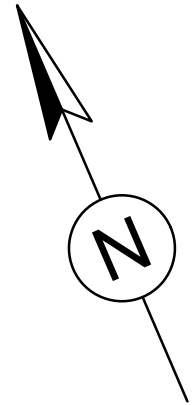
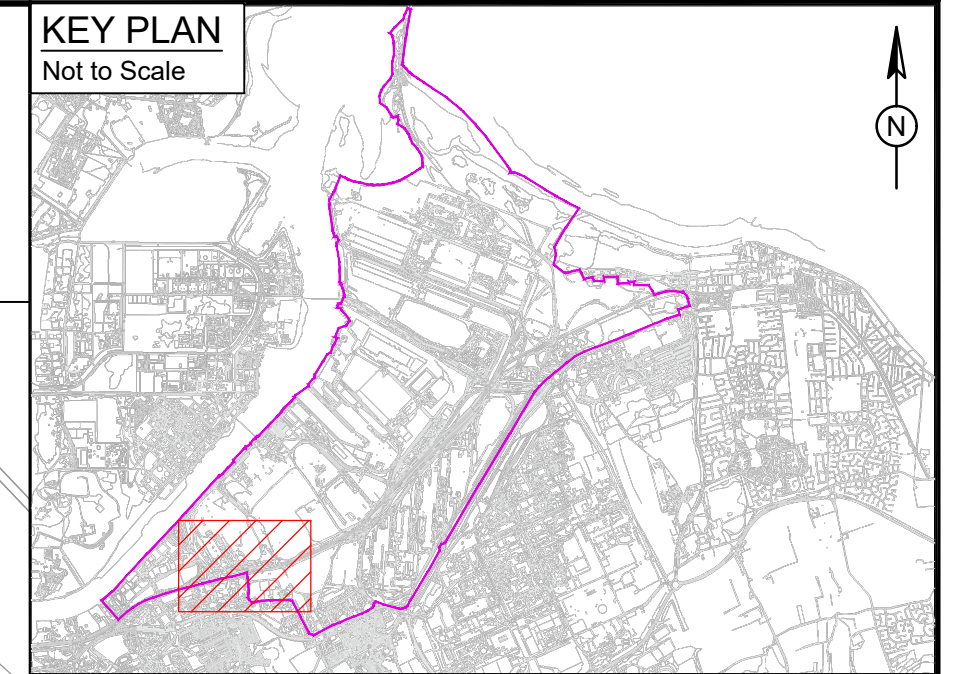


DO NOT SCALE

Millimetres
0 10 100



NOTE:
1. ALL BUILDINGS, STRUCTURES AND ASSOCIATED PLANT TO BE DEMOLISHED WITHIN EACH AREA SHOWN.



- NOTES:**
- DO NOT SCALE FROM THIS DRAWING.
 - RESIDUAL ANCILLARY STRUCTURES OUTSIDE OF FORMER WORKS AREAS HAVE BEEN OMITTED FOR CLARITY.
- STDC BOUNDARY
 - PROJECT SITE BOUNDARY
 - SOUTH BANK COKE OVENS BENZOLE WASHERS AND ASSOCIATED PLANT AND BUILDINGS
 - SOUTH BANK COKE OVENS BY-PRODUCTS AND ANCILLARY BUILDINGS
 - SOUTH BANK GAS HOLDER & DORMAN LONG TOWER AREA PHASE 2
 - INDICATIVE SITE LOCATION

SAFETY, HEALTH AND ENVIRONMENTAL INFORMATION

In addition to the hazards/risks normally associated with the types of work detailed on this drawing, note the following:

CONSTRUCTION

N/A

MAINTENANCE/CLEANING

N/A

DECOMMISSIONING/DEMOLITION

N/A

It is assumed that all works will be carried out by a competent contractor working, where appropriate, to an approved method statement

Rev.	Date	Description	By	Chkd	App'd
P02	30/06/2021	DORMAN LONG TOWER REMOVED FROM SCOPE	CK	IK	IK
P01	29/06/2021	PRELIMINARY ISSUE	CK	CP	TJM

ATKINS
Nova North
11 Bressenden Place
London
SW1E 5BY
Tel: +44 (0)1372 726140
Fax: +44 (0)1372 740055
www.atkinsglobal.com

STDC
Teesside Management Offices,
Redcar, TS10 5DW
www.southteesdc.com

South Tees Development Corporation

Project Title:
SOUTH TEES DEMOLITION

Drawing Name:
**SOUTH BANK COKE OVENS PHASE 2
PRIOR APPROVAL DEMOLITIONS**

Drawn by: CK Date: 30/06/2021
Checked by: IK Date: 30/06/2021
Approved by: IK Date: 30/06/2021

Drawing Number: **SBCO-ATK-ZZZ-ZZ-DR-C-0001** Revision: **P02**

Drawing Scale: **1:1250** Suitability Code: **S3** Page Size: **A1**



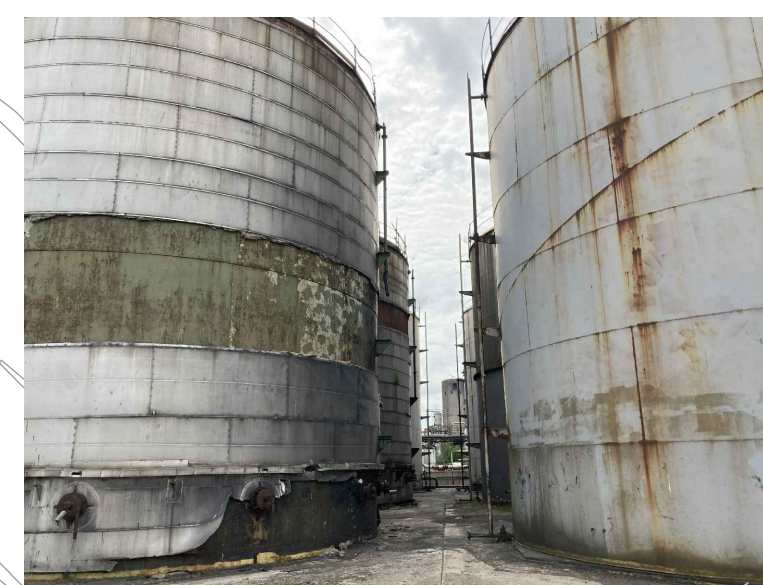
BENZOLE TANKS AND ASSOCIATED PLANT



GAS HOLDER AND EQUIPMENT



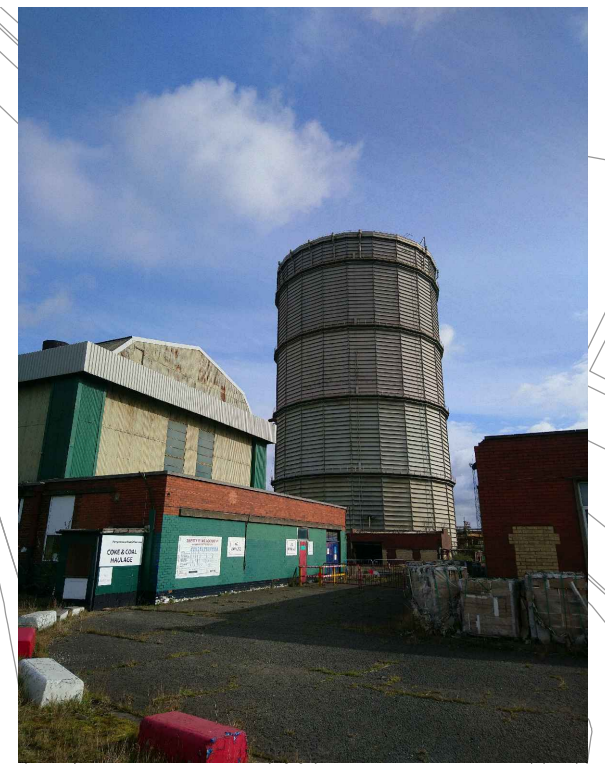
TAR STORAGE TANKS



TANKS AND EFFLUENT



AMMONIA WASHERS AND BENZOLE WASHERS



GAS HOLDER AND MAINTENANCE REPAIR SHOP



COAL CRUSHING HOUSE



SIMONS CARVES COAL BUNKER (DORMAN LONG TOWER) - EXCLUDED FROM SCOPE

This map is based on Ordnance Survey material with the permission of Ordnance Survey on behalf of the Controller of Her Majesty's Stationery Office. © Crown copyright. Unauthorised reproduction infringes Crown copyright and may lead to prosecution or civil proceedings. STDC 0100060033, 2020.

